

Announcing a series of four 640 x 480 resolution cameras Ti401 PRO new product TiX501 new product

A new full spectrum line of Fluke infrared cameras designed with the customer's challenges in mind.

Fluke is redefining the resolution standard for professional infrared cameras. All the cameras in this series offer the advantage of 640 x 480 resolution and the option of two different forms. Now customers can truly select a camera that is best suited to their operation without sacrificing resolution, ergonomics or features.

We recognize that it's not one approach for all—each industry, business and success measure is unique. Optimally engineered, Fluke cameras are designed to drive efficiency through the latest in thermography technology advancements. They offer everything needed for industrial professionals to safely, quickly and easily find, assess and solve mission-critical problems before they result in downtime, become costly or even disastrous.

Features and benefits:

Ti401 PRO, Ti480 PRO, TiX501 and TiX580

 <ul style="list-style-type: none">• Stunning 640x480 image quality for crisp, clear images, near or far.• IR-Fusion™ technology – adjust the level of infrared and visible light for better issue identification• Edit and analyze images on camera	 <ul style="list-style-type: none">• Instantly get an in-focus image with pinpoint¹ accuracy of your target with Fluke's exclusive LaserSharp® Auto Focus technology• Quickly and accurately determine the distance to your target with a built-in professional grade laser distance meter¹ <p>¹Up to 30 meters (100 feet).</p>
	

Optional lenses to maximize your infrared camera's performance. Capture images close or from a distance

- Pre-calibrated optional lenses
- 2x telephoto
- 4x telephoto
- Macro
- Wide angle

TiX501 and TiX580

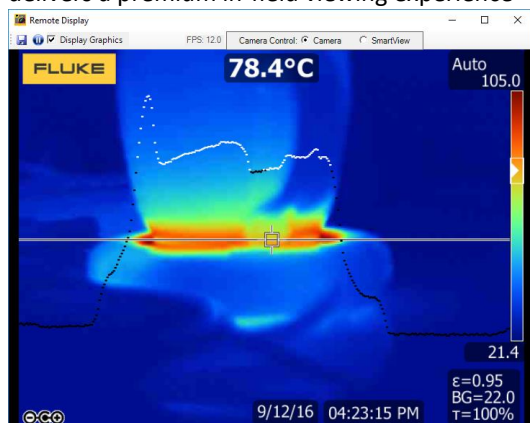


Capture the high definition thermal images needed to complete reliability inspections, make industrial maintenance decisions, conduct building diagnostic testing and troubleshooting. Take advantage of analytics and reports with software that offers asset tagging, streaming infrared data, trend analysis and remote camera operation. 5.7-inch touchscreen LCD with on-camera analytics for in-field image analysis.



Flexible and Ergonomic Form Factor

Easily navigate over, under and around objects with full 240° rotating lens and see the image before you capture it. Outside, the rotating screen lets you make adjustments to minimize glare, and the large 5.7 inch LCD touchscreen delivers a premium in-field viewing experience



Key features for R&D users

Ti401 PRO and Ti480 PRO



Perform thermal imaging inspections with more confidence and faster results than ever before. The 640x480 resolution, Fluke Ti401 PRO offers the ruggedness and ease of use that you'd expect from Fluke along with sharper, crisper images and more exacting temperature measurements. The popular pistol-grip design allows for one-handed use. Never lose sight of an issue with the 3.5-inch (landscape) LCD screen. Stream infrared data and operate the camera remotely with Fluke Connect Desktop software.

Infrared imagery and data import capabilities to MATLAB® and LabVIEW® software platforms

- Static infrared images and their data
- Streaming infrared data and its data

Customer applications:

Industrial Maintenance



Process applications: EG: Oil & Gas and Chemical Processing



Research & Development



Utilities



Job role	Vertical
<ul style="list-style-type: none"> ▪ Maintenance professionals ▪ Troubleshooting technicians ▪ Preventive maintenance professionals ▪ Predictive maintenance professionals ▪ Industrial and commercial electricians ▪ I&E Technicians ▪ HVAC/R technicians ▪ Facilities managers ▪ Weatherization specialists ▪ Energy auditors ▪ Restoration and remediation professionals 	<ul style="list-style-type: none"> ▪ Industrial plants (manufacturing, process, petrochemical, etc.) ▪ Commercial buildings and facilities ▪ Government buildings ▪ Schools ▪ Hospitals ▪ Electrical, water, and natural gas utilities ▪ Residential dwellings

Basic Product Specifications:




Below is a sampling of the features that vary between the four different cameras. For detailed specifications please see the data sheet

	Ti401 PRO	Ti480 PRO	TiX501	TiX580
Infrared resolution	640 x 480 (307,200 pixels)	640 x 480 (307,200 pixels) or 1280 x 960 with SuperResolution	640 x 480 (307,200 pixels)	640 x 480 (307,200 pixels) or 1280 x 960 with SuperResolution
IFOV (spatial resolution)	0.93 mRad, D:S 1065:1			

Field of view	24 °H x 17 °V			
Temperature measurement range	-20 °C to +650 °C (-4 °F to +1,202 °F)	-20 °C to +1,000 °C (-4 °F to 1,832 °F)	-20 °C to +650 °C (-4 °F to +1,202 °F)	-20 °C to +1,000 °C (-4 °F to 1,832 °F)
MultiSharp Focus	No	Yes, focused near and far, throughout the field of view	No	Yes, focused near and far, throughout the field of view
LaserSharp Auto Focus	Yes, for consistently in-focus images. Every. Single. Time			
Fluke Connect app compatible	Through the desktop, assign images to assets, easily compare measurement types in one location and create reports.		Future, automatically assign images to assets, easily compare measurement types in one location and create reports through a cloud-based system.	
IR-Fusion technology	Yes, adds the context of the visible details to your infrared image			
Ruggedized touchscreen	3.5 inch (landscape), 640 x 480 LCD		5.7 inch (14.4 cm) landscape 640 x 480 LCD	
Ergonomic design	Pistol-grip design for one-handed use		240 ° rotatable (articulating) lens	
Thermal sensitivity (NETD)	≤ 0.075 °C at 30 °C target temp (75 mK)	≤ 0.05 °C at 30 °C target temp (50 mK)	≤ 0.075 °C at 30 °C target temp (75 mK)	≤ 0.05 °C at 30 °C target temp (50 mK)
Frame rate	60 Hz or 9 Hz versions			
Image file formats	bmp, jpeg, is2	bmp, jpeg, is2, is3, AVI	bmp, jpeg, is2, is3, AVI	bmp, jpeg, is2, is3, AVI
Video recording formats	No	Standard and radiometric	Standard	Standard and radiometric
IR-PhotoNotes	Yes - 2 images	s - 5 images	Yes - 2 images	s - 5 images
Remote control operations	Remote display through Fluke Connect	Remote display and control operation through Fluke Connect	Remote display through Fluke Connect	Remote display and control operation through Fluke Connect
Auto capture	No	Yes	No	Yes
MATLAB® and LabVIEW® tool boxes	--	Integrate camera data, infrared video and images into software to support R&D analysis		
User defined measurement boxes	1 expandable-contractible measurement box with MIN-MAX-AVG temp display	Up to 3 expandable-contractible measurement box with MIN-MAX-AVG temp display	1 expandable-contractible measurement box with MIN-MAX-AVG temp display	Up to 3 expandable-contractible measurement box with MIN-MAX-AVG temp display
Hard case	Rugged, hard carrying case; soft transport bag	Rugged, IP67 rated, airtight hardcase with custom foam insert		

Included with product:

All cameras	<p>Infrared camera with standard infrared lens</p> <p>AC power supply and battery pack charger (including universal AC adapters)</p> <p>two rugged lithium ion smart battery packs</p> <p>USB cable</p> <p>HDMI video cable</p> <p>4GB micro SD card</p> <p>adjustable hand strap</p> <p>Fluke Connect™ desktop software and user manual</p>
Ti401 PRO	All the above plus a rugged, hard carrying case along with a soft transport bag

	
<p>Ti480 PRO</p> 	<p>All the above plus a rugged, IP67 rated, airtight hard carrying case</p>
<p>TiX501 and TiX580</p> 	<p>All the above plus a rugged, IP67 rated, airtight hard carrying case and an adjustable neck strap</p>



敏盛企業有限公司

<http://www.mavin.com.tw>

免責聲明

資料僅供參考，若有與原廠不合之處，請以原廠規格為準，且不供任何證明文件之用

TEL:03-5970828 FAX:03-5972622 新竹湖口工業區工業四路3號2F