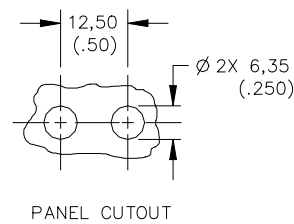
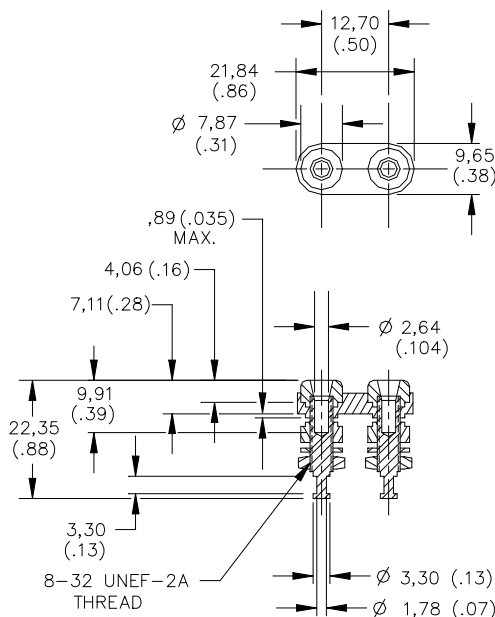
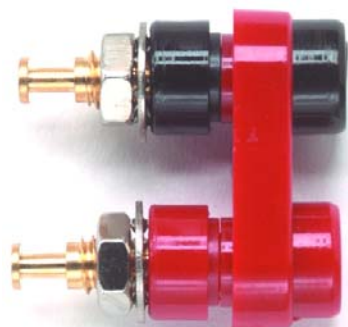


Model 2143
Double Miniature Banana Jack



MODEL NO.	MTG. PLATE COLOR
2143-0	BLACK PLATE
2143-2	RED PLATE

Features

- Accepts miniature banana plugs.
- Mounts in panels up to .188" thick.

Materials

Miniature Banana Jack:
 Body – Gold plated brass
 Lockwasher #8 – Nickel Plated Steel
 Hex Nut #8-32 – Nickel Plated Brass
 Insulation – Polycarbonate, Color: One Red and one Black
 Panel Insulator – Polycarbonate

Ratings

Operating Voltage: For *CE Compliance* and for personal safety, do not hold in hand when voltages exceed 30 Vrms/60 Vdc. Maximum voltage for *hands free use*: 1500 Vrms.
 Do not use on circuits where transient stresses can exceed the rated voltage.

Operating Temperature: +115°C (+239°F) Max.

Operating Current: 5 Amperes Max.

Ordering Information

Model: 2143-
 * = Standard Mounting Base Color: -0 Black, -2 Red
 Ordering Example: 2143-2, Mounting Base Color is Red.

USA: Sales: 800-490-2361
 Technical Support: technicalsupport@pomonatest.com
 Fax: 425-446-5844

Europe: 31-(0) 40 2675 150 International: 425-446-5500

Where to Buy: www.pomonaelectronics.com

All dimensions are in inches. Tolerances (except noted): .xx = ±.02" (.51 mm), .xxx = ±.005" (.127 mm). All specifications are to the latest revisions. Specifications are subject to change without notice. Registered trademarks are the property of their respective companies.

免責聲明
 資料僅供參考，若有與原廠不合之處，請以原廠規格為準，且不提供任何證明文件之用